

# MONTHLY MEMBERSHIP PROGRESS REPORT

LOCATION AUSTRALIA

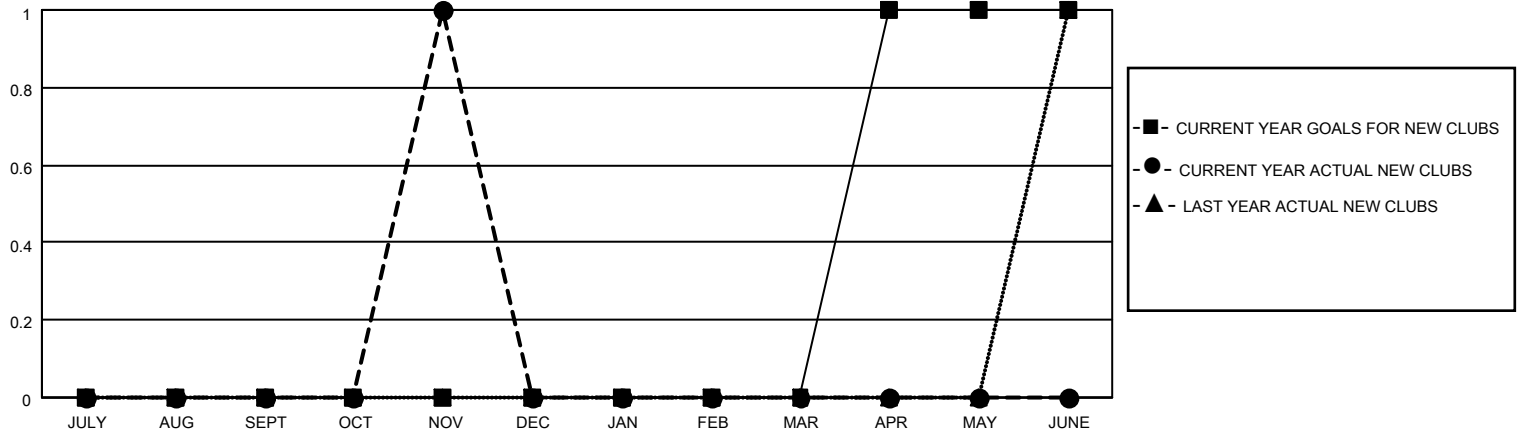
District 201Q2

Results as of: 11/30/2020

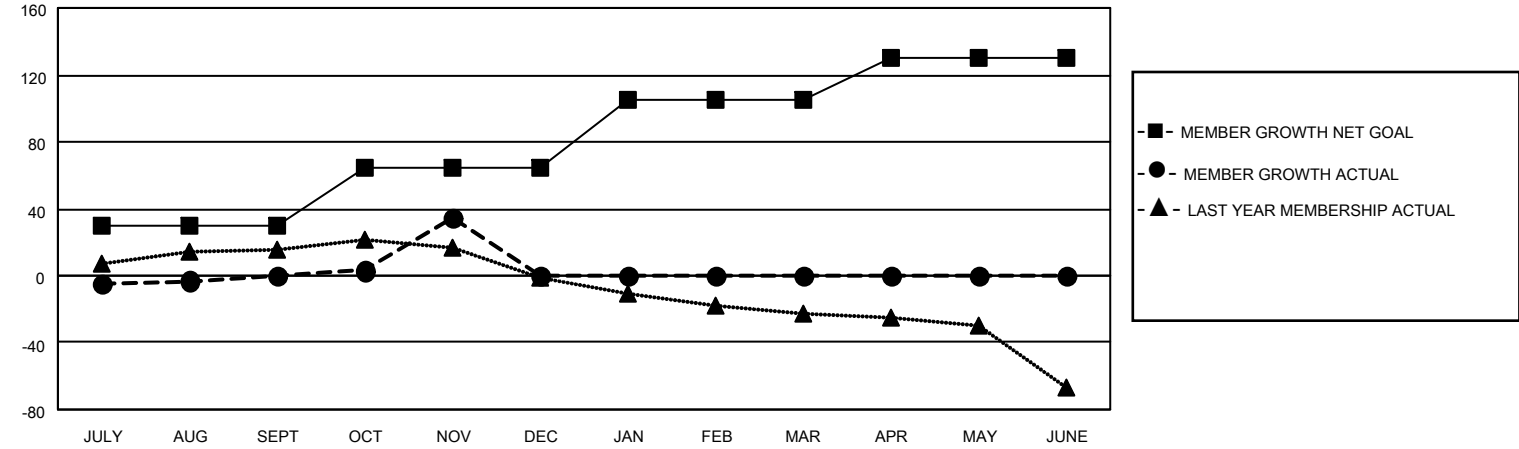
Clubs			
RESULTS FOR 2020-2021			
QUARTER	NEW CLUB GOAL	NEW CLUBS	DROPPED CLUBS
JULY/AUG/SEPT	0	0	0
OCT/NOV/DEC	0	1	0
JAN/FEB/MAR	0	0	0
APR/MAY/JUNE	1	0	0

Members			
RESULTS FOR 2020-2021			
QUARTER	MEMBER GROWTH NET GOAL	MEMBER GROWTH ACTUAL	DROPPED MEMBERS ACTUAL (including transfers)
JULY/AUG/SEPT	30	32	28
OCT/NOV/DEC	35	61	22
JAN/FEB/MAR	40	0	0
APR/MAY/JUNE	25	0	0

**GOALS AND ACTUAL NEW CLUBS CUMULATIVE**



**GOALS AND ACTUAL MEMBERS CUMULATIVE**



DROPPED CLUBS: 0	31 CLUBS OF 63 ADDED 1 OR MORE NEW MEMBERS	<u>GENDER DISTRIBUTION</u> MALE 643 (57.77%) FEMALE 470 (42.23%)
<u>DROPPED MEMBERS</u> DECEASED 5 CLUB CANCELLED 0 OTHER 45 <hr/> TOTAL 50	<a href="#">CLICK HERE FOR CUMULATIVE MEMBERSHIP DATA</a>	TOTAL FAMILY UNIT MEMBERS 160 FAMILY MEMBERS PAYING HALF DUES 80